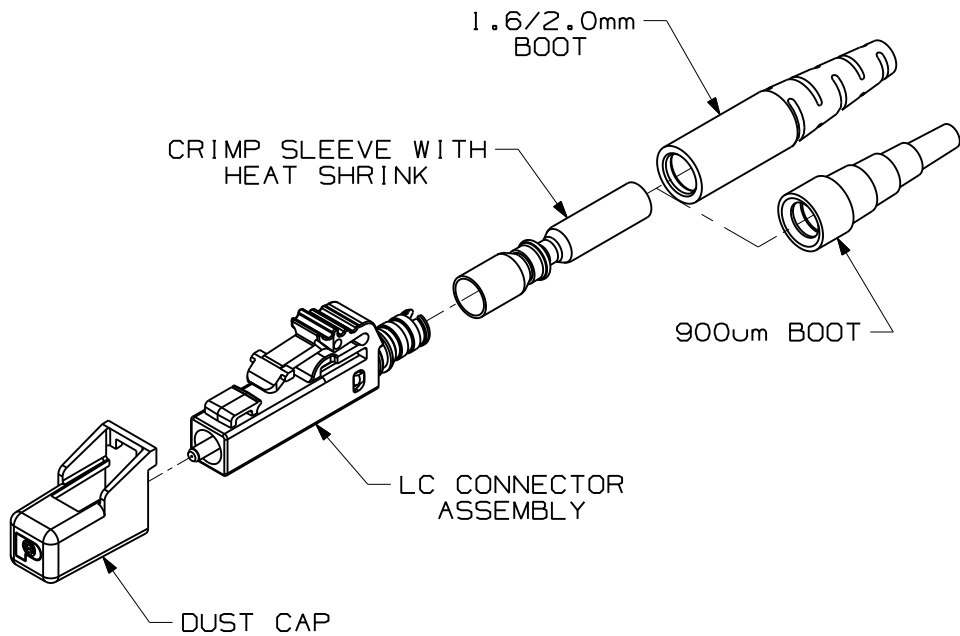


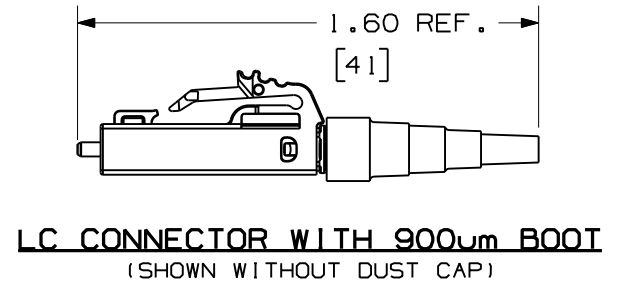
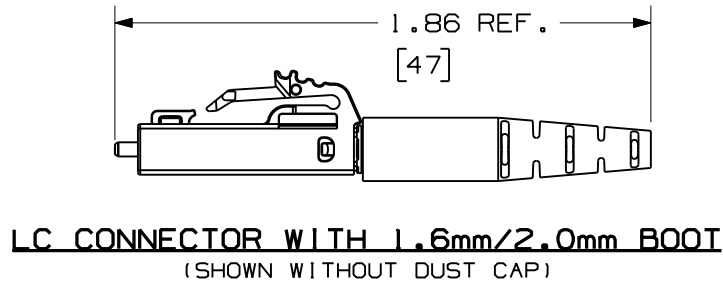
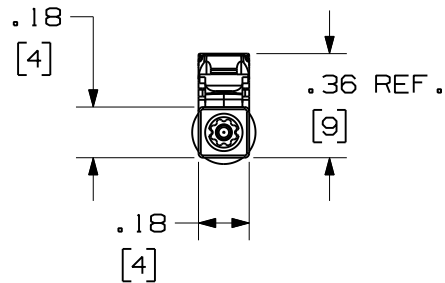
THIS COPY IS PROVIDED ON A RESTRICTED BASIS AND IS NOT TO BE USED IN ANY WAY DETRIMENTAL TO THE INTERESTS OF PANDUIT CORP.



NOTES:

1. SEE CURRENT CATALOG FOR PART NUMBER SUFFIXES TO INDICATE COLOR AND/OR PACKAGE QUANTITY.
2. MATERIAL:
 BODY/HARDWARE: PLASTIC
 BOOTS: THERMOPLASTIC RUBBER
 FERRULE: ZIRCONIA CERAMIC
3. FULLY COMPLIES WITH THE FIBER OPTIC CONNECTOR PERFORMANCE REQUIREMENTS AS SPECIFIED BY TIA/EIA-568-B.3.
4. ALL MATERIALS AND COMPONENTS USED MUST MEET THE MATERIAL RESTRICTIONS OF RoHS, (EUROPEAN DIRECTIVE 2002/95/EC ON THE RESTRICTION OF HAZARDOUS SUBSTANCES) AS PROPOSED BY THE RoHS TECHNICAL ADAPTATION COMMITTEE.
5. DIMENSIONS IN BRACKETS ARE METRIC [mm]

| PANDUIT PART NUMBER | APPLICATION | BOOT COLOR | WEIGHT |
|---------------------|---------------|------------|------------------------------------|
| NKFLCSMWH | 62.5/125 OM1 | WHITE | .037 lb/10 pcs [16.7g/10 pcs] |
| NKFLCSMBL | 50/125 OM2 | BLACK | |
| NKFLCSMAQ | 50/125 OM3 | AQUA | |
| NKFLCSSWH | 9/125 OS1/OS2 | WHITE | |



| REV | DATE | BY | CHK | DESCRIPTION | ECN | R | CUST | SUP | OTH |
|-----|----------|-----|-----|------------------------|----------|---|------|-----|-----|
| R | 12-21-09 | EFK | | RELEASED TO PRODUCTION | 01302-65 | | | | |

NETKEY FIBER OPTIC SINGLEMODE/MULTIMODE
SIMPLEX LC CONNECTOR
CUSTOMER DRAWING

PANDUIT™
CORP.
TINLEY PARK, ILL 60477

ALL DIMENSIONS ARE GIVEN IN INCHES UNLESS OTHERWISE SPECIFIED.
 DIMENSIONAL TOLERANCES ARE:
 (.X) ±.010 (0.3)
 (.XX) ±.003 (0.08) ANGLES

THIRD ANGLE PROJECTION

DRAWN BY: EFK
DATE: 12-21-09
CHK'D:

DRAWING FILENAME: M01302AC_DC/00A
SCALE: NONE
PART NO.: NKFLCSM**
NKFLCSS**
DRAWING NO.: 01302-65
SIZE: A